

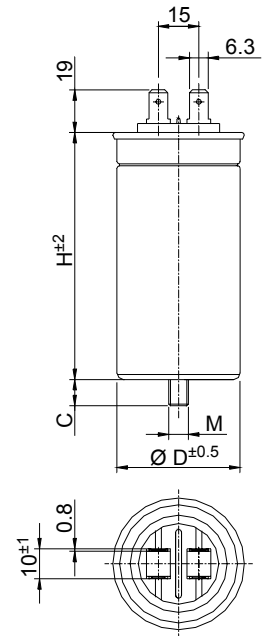
**ALUMINIUM CASE - SAFETY DEVICE (FPU)**

**PROTECTED 10000 AFC -25 ... +70°C**

**Reference Standards: IEC 1071 VDE 0560 part 1 and 2**

**TECHNICAL DATA**

Dielectric: Polypropylene film  
Plates: Aluminium layer deposited under vacuum  
Cover: Metal deck and steatite insulator  
Terminals: Tinned double Faston 6.3 mm  
Winding: Non-inductive type  
Climatic category: GPD/LS DIN40040  
40/85/21 IEC 68-1  
Vibration strength: DIN 40040, table 6, class V



**ELECTRICAL CHARACTERISTICS**

Nominal voltage <b>Un</b> :	400 Vdc	600 Vdc	700 Vdc
Rated voltage <b>U<sub>RMS</sub></b> 50Hz:	250 Vac	330 Vac	400 Vac
Peak repetitive voltage <b>U<sub>PKR</sub></b> :	600 Vdc	800 Vdc	900 Vdc
Surge voltage <b>Us</b> :	750 Vdc	900 Vdc	1000 Vdc

Category voltage (Vc): up to 70°C Vc=Un  
Capacitance tolerance: ±5% (J) ; ±10% (K)

**TEST METHODS AND PERFORMANCES**

Test voltage terminal to terminal ( <b>U<sub>TT</sub></b> )	2,5 Vn/ for 10 s at 25°C or 1.5 <b>U<sub>RMS</sub></b> for 10s at 25°C
Test voltage terminal to case ( <b>U<sub>TC</sub></b> )	3 kV 50Hz for 60 s
Rated insulation Voltage <b>U<sub>i</sub></b>	700V - 50Hz - Insulation group B, according to VDE 0110 part 1
Damp heat test	Permissible relative humidity: Annual average ≤ 80% at 24°C on 30 days/year, on other days occasionally 90% Dewing not admissible.
Life expectancy	≥ 100.000 hours at <b>U<sub>RMS</sub></b> and at Un at 45°C
Failure quota	300/10 <sup>9</sup> components hours
Capacitance deviation in temperature range (-40..+85°C)	± 1,5% max on capacitance value at 20°C
Changes of capacitance as function of operating time	- 5 % after 100.000 hours at <b>U<sub>RMS</sub></b> or Un
Installation	Whatever position

Code	C µF	U <sub>RMS</sub> Vac	Un Vdc	tgδ max x 10 <sup>-4</sup>	I <sub>RMS</sub> A	I <sub>PKR</sub> A	I <sub>PKS</sub> A	Case		Bolt		
								D	H	C	Thread	Torque
C44HFF35150ZB0J	15	250	400	10	8	450	600	45	61	16	M8	10N
C44HFG35400ZB0J	40	250	400	15	10	800	1000	50	105	16	M12	10N
C44HFG35600ZB0J	60	250	400	35	18	800	1200	60	98	16	M12	10N
C44HFG35750ZB0J	75	250	400	20	10	1500	2000	60	98	16	M12	10N
C44HFG35800ZB0J	80	250	400	20	18	1200	1500	60	133	16	M12	10N
C44HFG36120ZB0J	120	250	400	30	16	1800	2000	60	133	16	M12	10N
C44HHG35150ZA0J	15	330	600	17	18	450	590	50	85	16	M12	10N
C44HHG35300ZA0J	30	330	600	10	18	1200	1560	60	85	16	M12	10N
C44HHG35420ZA0J	42	330	600	12	18	1260	1750	60	98	16	M12	10N
C44HHG35560ZA0J	56	330	600	18	18	1120	1450	60	133	16	M12	10N
C44HJG35300ZA0J	30	400	700	20	18	600	900	60	105	16	M12	10N
C44HJG35550ZA0J	55	400	700	20	18	1100	1650	75	150	16	M12	10N